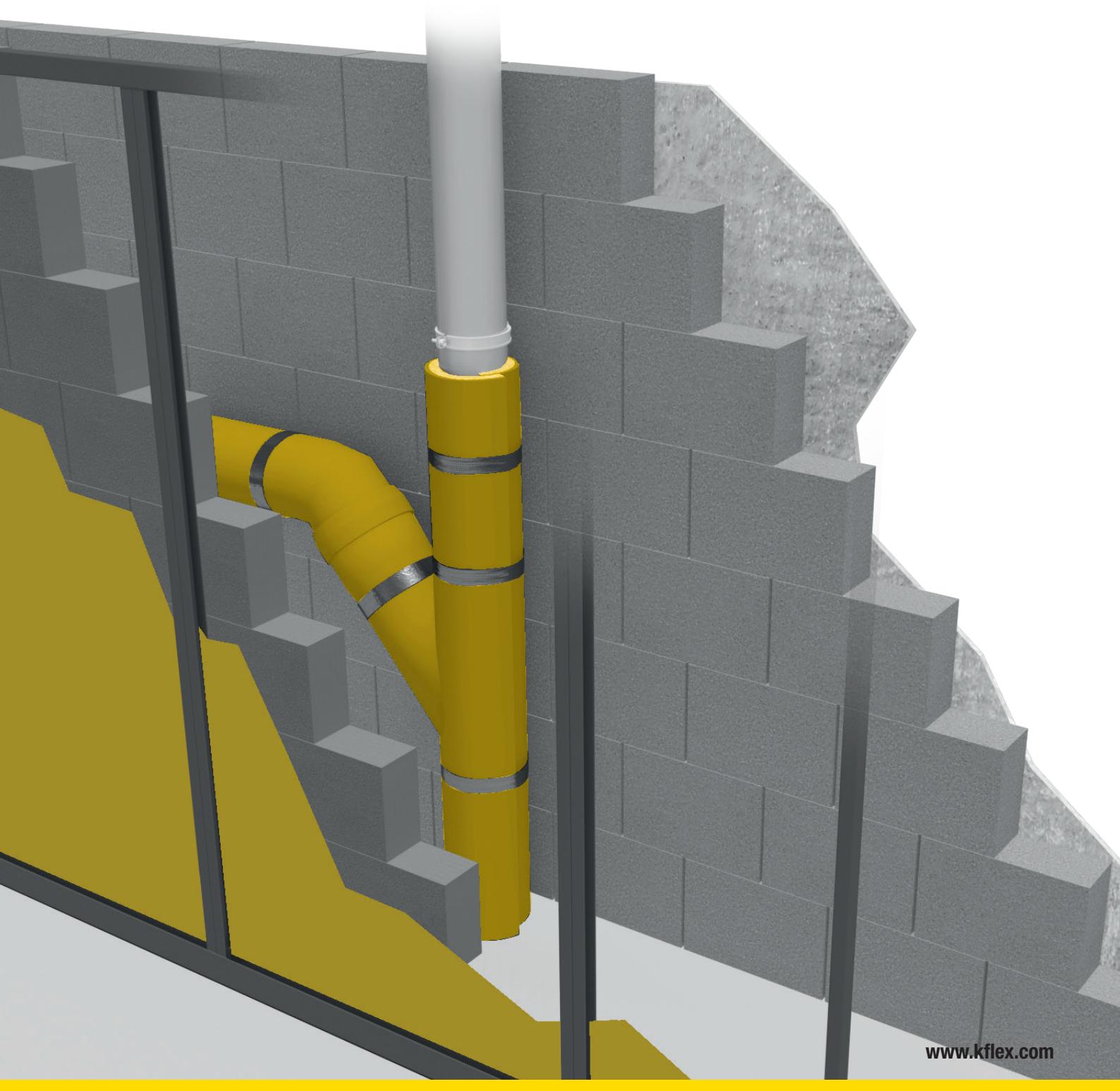


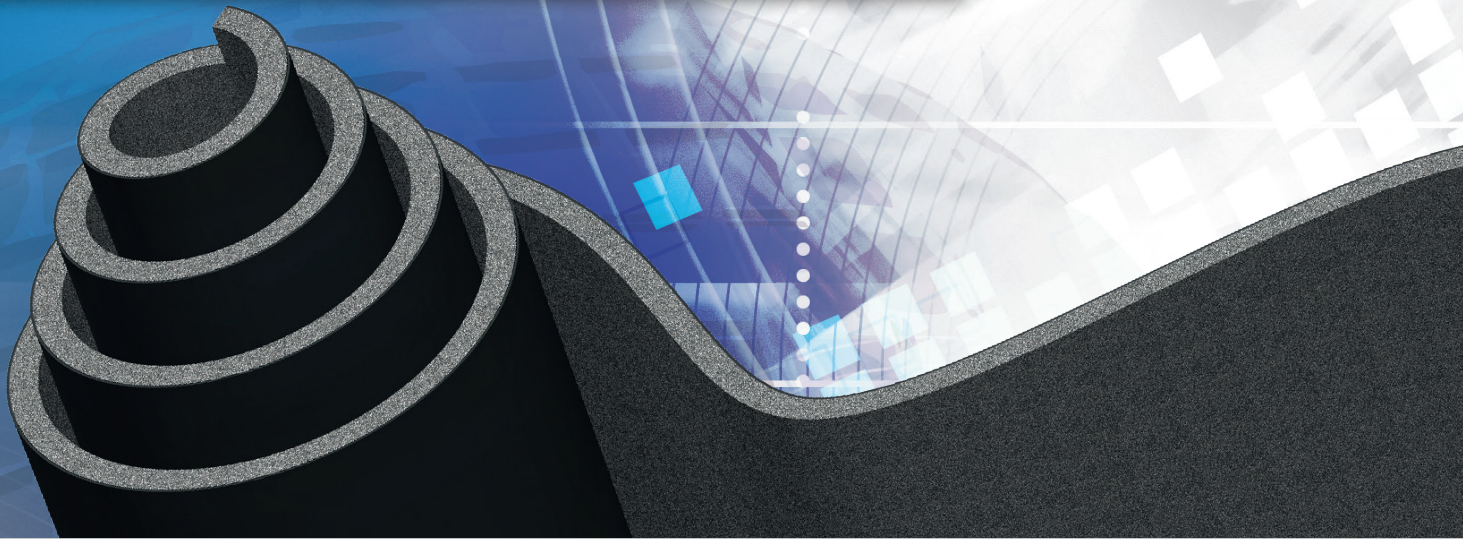


EDITION 2021

# K-FLEX® K-FONIK ST GK APPLICATION MANUAL



# K-FLEX® K-FONIK ST GK APPLICATION MANUAL



## INDEX

Introduction	Pg. 3
Insulation of pipes	Pg. 4
Insulation of pipe support	Pg. 5

Insulating piping for cooling, heating or air-conditioning systems requires a methodical approach, as well as the right tools to do the job properly.

K-FLEX® products are backed up by a comprehensive range of accessories specifically designed to help the installer.

This manual contains a wealth of information and practical tips, along with clear, step-by-step, illustrated instructions to ensure you get the best results quickly and easily.

## GUIDE TO SYMBOLS



A **blue arrow**: indicates parts or sections to be glued.



**Green lines and arrows**: indicate a dimension to be measured.



A **red line with an arrow**: indicates the direction for measuring or fitting.



Smooth elastomeric sound insulation sheet in various thicknesses, coupled with a high density elastomeric sheet. The product is lead-free and therefore does not represent a health risk. K-FONIK ST GK combines the features of K-FONIK GK with a layer of elastomeric K-FLEX® ST.

K-FONIK ST GK is ideal for sound insulation of pipelines and drainage systems.

The product is available in different thicknesses, standard or adhesive, with a coating on GK layer (alu or TNT).

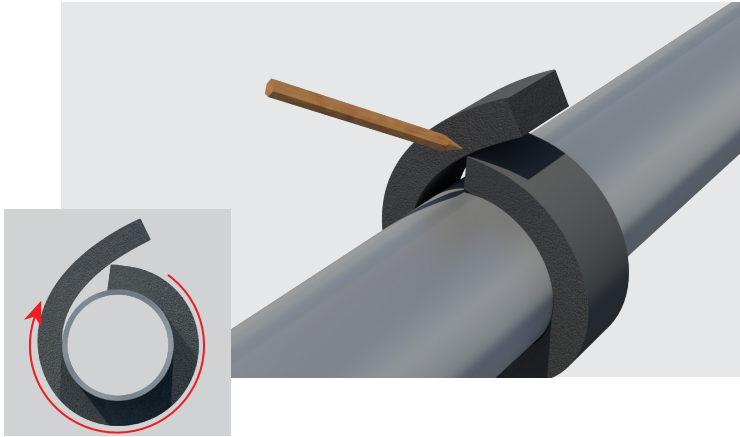
The product is also available as halogen Free, K-FONIK ECO GV.

**INSTALLATION IN DRAINAGE PIPE SYSTEM**

K-FONIK ST GK can be installed in two ways:

- Glued
- Fixed

**MEASURING A CIRCUMFERENCE**



The measurement is obtained by using a strip of K-FONIK ST GK.

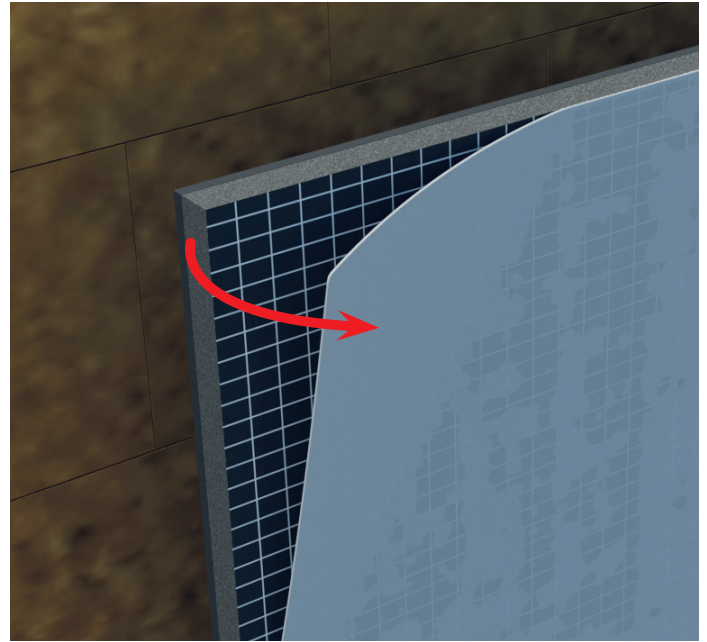
This gives you the measurement of the circumference, including the thickness of the insulating material itself.

Do not stretch the strip when encircling the pipe, as this will alter the measurement.

Mark the strip with chalk where the two edges overlap, if material is glued.

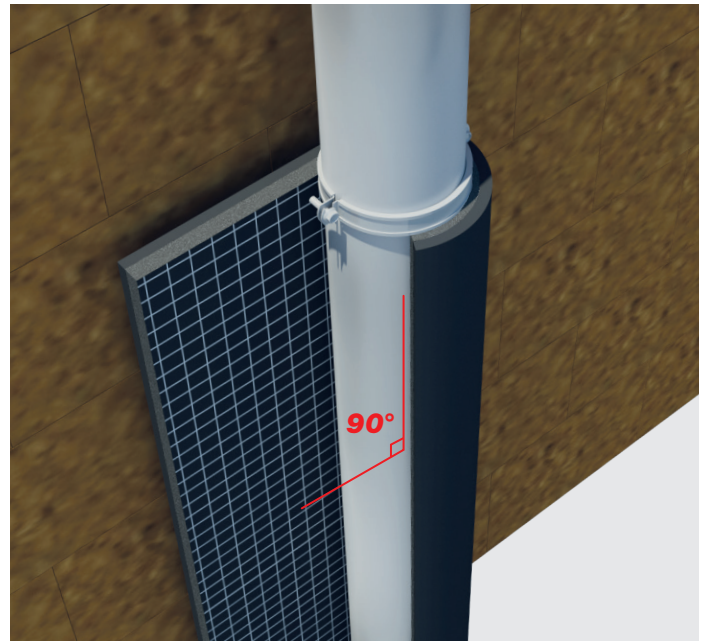
Leave 5cm overlap if material is mechanically fixed.

K-FONIK ST GK is available in standard or adhesive version.



Glueing of standard sheets  
Apply K-FLEX® adhesive on ST layer, on all the edges.

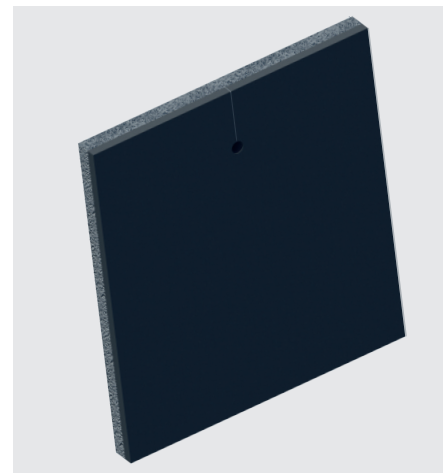
Glueing of adhesive sheets  
Remove the liner and apply adhesiv on edges only.



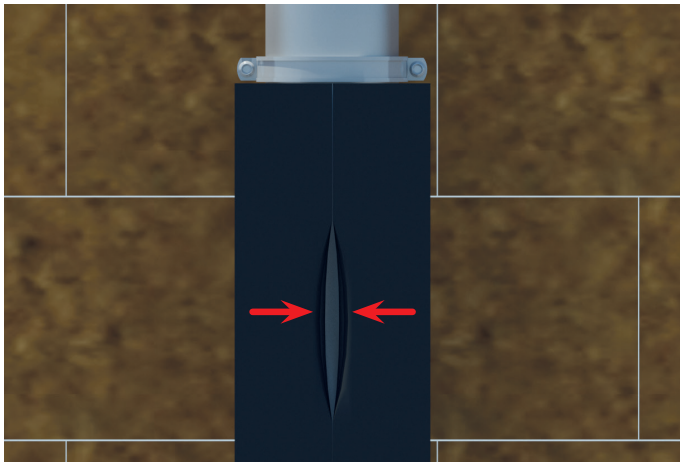
Place the sheet on the pipe, aligned to the existing supports.

## PIPE SUPPORT INSULATION

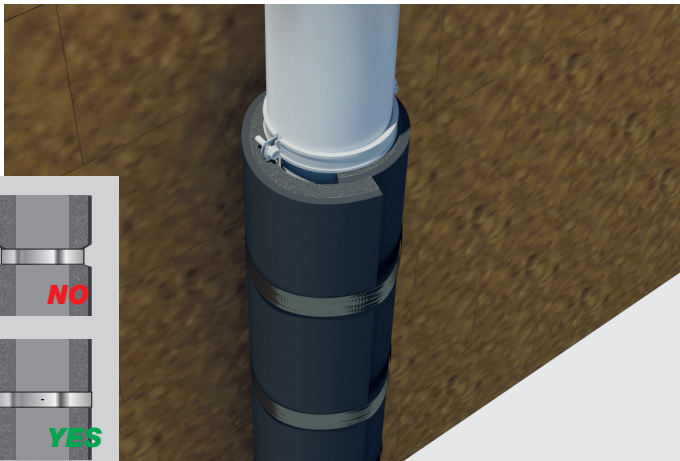
Measure the circumference and the length of the support. add 5cm overlap each side.



Cut a hole for the screw and apply adhesive.



While glueing sheets to the pipe, when attaching the two edges, press them together firmly with your fingers, starting at the far ends, then the centre and lastly along the intermediate points to avoid an irregular joint.

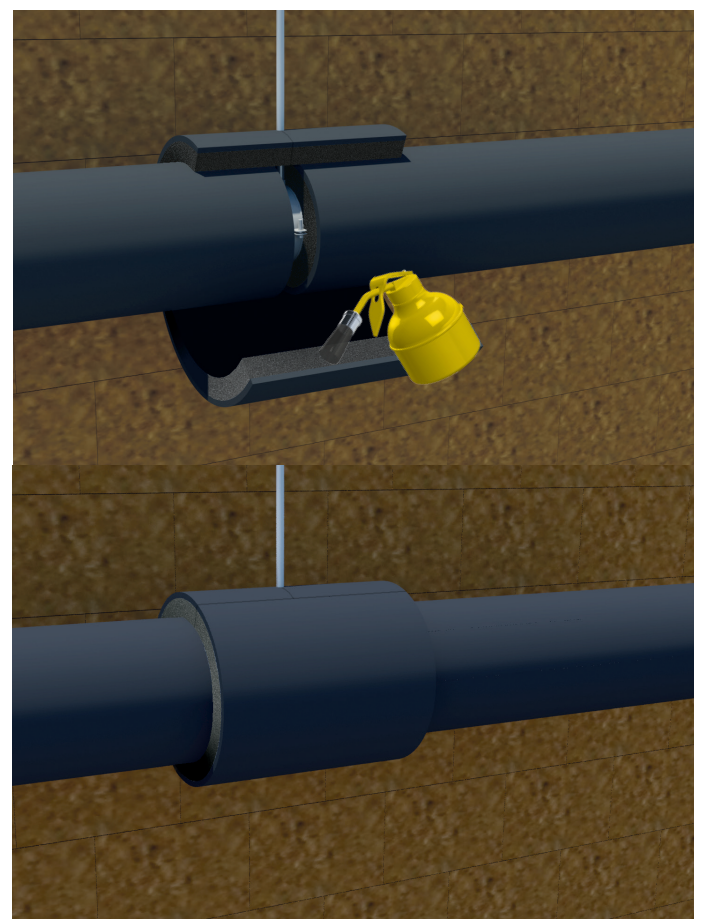


While fixing mechanically, use metallic wire, adhesive tape or nylon strips (approx 6 fixing per meter).

Do not tight to much, to avoid compression of the material.



For condensation prevention applications, glue all the edges and cover with adhesive tape.



For insulation of special pieces, K-FLEX® can support the installer with specific templates.



## CONTACT

### **L'ISOLANTE K-FLEX S.p.A.**

Via Don Locatelli, 35 - 20877 Roncello (MB) - Italy

E-mail: [internationalsales@kflex.com](mailto:internationalsales@kflex.com)

Tel.: +39 039 6824.1

[www.kflex.com](http://www.kflex.com)

# 2021